



Note: The following is an English translation of the Japanese-language original.

May 13, 2025

[Press Release]

Japan Petroleum Exploration Co., Ltd.

Tel: +81-3-6268-7110 (Media Relations)

<https://www.japex.co.jp/en/contact/>

**Reorganization to Reinforce Business Execution Structure**  
**for Domestic Oil and Natural Gas E&P Business and Natural Gas and LNG Supply Business**

Japan Petroleum Exploration Co., Ltd. (JAPEX) announces that it will change its organization on July 1, 2025, to enhance the profitability of its domestic oil and gas E&P (exploration, development, and production) business (hereinafter “Domestic E&P Business”) and natural gas and LNG supply business (hereinafter “Gas Supply Business”).

In this reorganization, the functions and employees of the current “Domestic E&P Project Division” and “Gas Supply & Facilities Engineering Division” will be consolidated to form “Domestic Development Project Division” (hereinafter the “New Division”). The main base of the New Division will be located in Nagaoka City, Niigata Prefecture, and the current “Nagaoka District Office” will be incorporated into the New Division. Additionally, the “General Mining Office” will be newly established within the New Division to centrally manage all plants and Field Offices for production operations in the Domestic E&P Business. Furthermore, the current “Facility Engineering Dept. of Gas Supply & Facility Engineering Division” will be transferred to the “Technology Division”.

The current “Soma District Office” will be incorporated into the New Division and renamed “Soma LNG Terminal,” and some of the functions of the current “Gas Supply & Facilities Engineering Division” will be transferred to the Soma LNG Terminal.

In addition, the functions and employees related to managing Domestic E&P Business and Gas Supply Business at the “Hokkaido District Office” and “Akita District Office” will be gradually consolidated into the New Division. Both offices will reduce their functions on July 1, 2025, consolidate some of their functions and employees into the New Division, and then undergo further streamlining on April 1, 2026, to be reorganized as regional offices under the umbrella of the General Mining Office and renamed “Hokkaido Office” and “Akita Office” respectively.

This reorganization will strengthen our business structure and improve operational efficiency and speed with synergism in promoting DX, enhance the training of young employees, and optimize the allocation of personnel to growth areas.

For details on the appointment of executives related to this reorganization, please refer to the “Appointment of Executives” published on May 13, 2025.

<Reference>

Press release on March 28, 2024, [“Policy to Reinforce Business Execution Structure for Domestic Oil and Gas E&P Business, and Natural Gas and LNG Supply Business”](#)

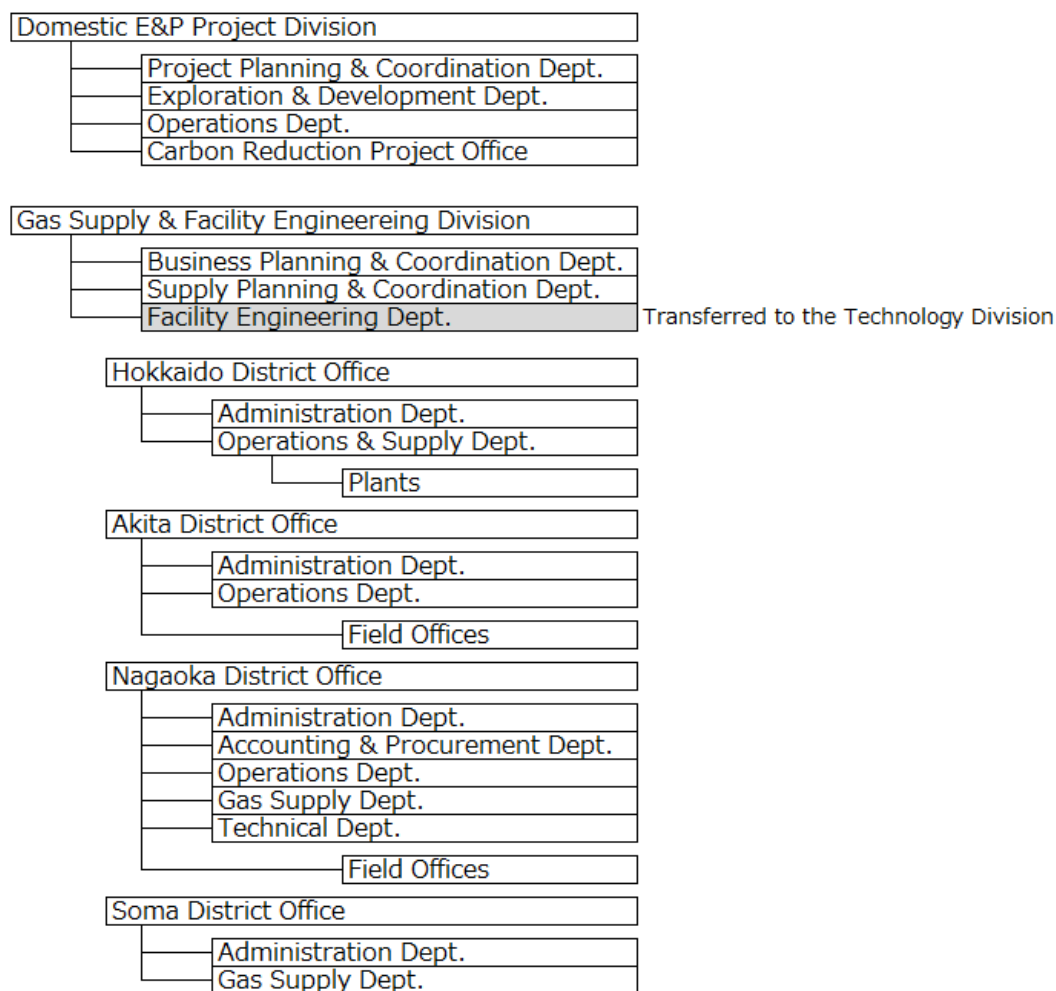
<Appendix>

Japan Petroleum Exploration Co., Ltd. Organization

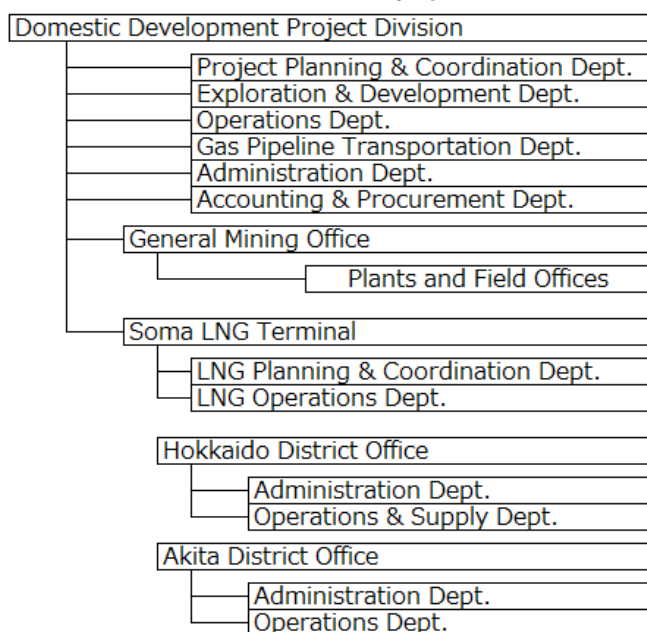
<Appendix> Japan Petroleum Exploration Co., Ltd. Organization

\*Only parts related to this reorganization are indicated.

【Current】



【Amendment as of July 1, 2025】



【Amendment as of April 1, 2026】

|                                       |                       |                                       |
|---------------------------------------|-----------------------|---------------------------------------|
| Domestic Development Project Division |                       |                                       |
|                                       |                       | Project Planning & Coordination Dept. |
|                                       |                       | Exploration & Development Dept.       |
|                                       |                       | Operations Dept.                      |
|                                       |                       | Gas Pipeline Transportation Dept.     |
|                                       |                       | Administration Dept.                  |
|                                       |                       | Accounting & Procurement Dept.        |
|                                       | General Mining Office |                                       |
|                                       |                       | Plants and Field Offices              |
|                                       |                       | Hokkaido Office                       |
|                                       |                       | Akita Office                          |
|                                       | Soma LNG Terminal     |                                       |
|                                       |                       | LNG Planning & Coordination Dept.     |
|                                       |                       | LNG Operations Dept.                  |

###